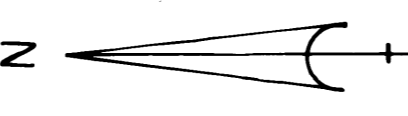


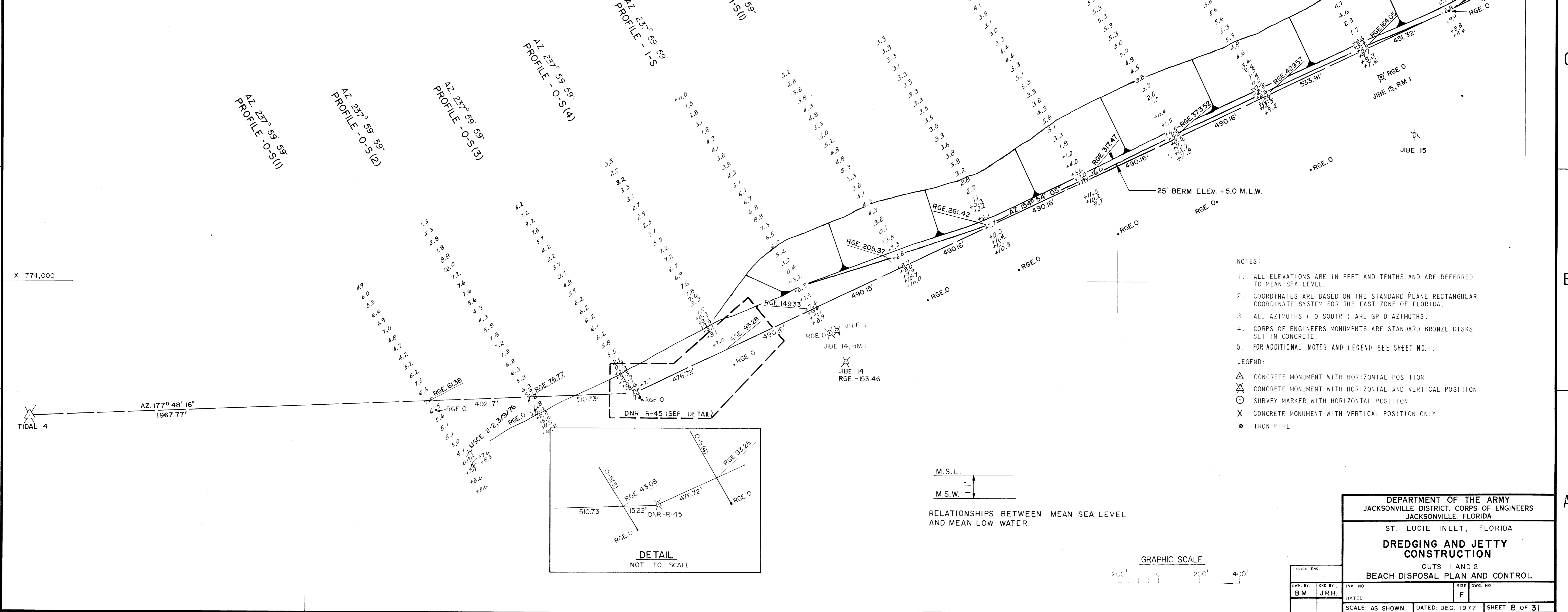
PB7 P067

PROFILE RANGE 00	PLANE COORDINATES		MONUMENT	PLANE COORDINATES		ISL ELEV	BASE LINE P. I.	PLANE COORDINATES		AZIMUTH	DISTANCE	MARKER	FROM	TO	AZIMUTH	DISTANCE
	X	Y		X	Y			X	Y							
0-S-(1)	773,365.47	1,029,358.92	TIDAL 4	773,342.27	1,031,357.72	4.64	III	780,393.06	1,009,923.89	158° 44' 51"	3631.41	1" IRON PIPE	TIDAL 4	DNR R-45	257° 48' 14"	2985.90
0-S-(2)	773,371.27	1,028,858.96	JIBE 14	773,610.04	1,027,337.98	6.21	IV	779,076.75	1,013,308.33	166° 19' 24"	3130.79	1" IRON PIPE	DNR R-45	DNR R-110B	334° 54' 05"	5405.97
0-S-(3)	773,419.41	1,028,366.46	DNR R-45	773,456.68	1,028,374.01	8.82	V	778,336.49	1,016,350.35	151° 52' 34"	2025.04	1" IRON PIPE	JIBE 14	JIBE 14 RM-1	237° 59' 59"	153.46
0-S-(4)	773,579.80	1,027,892.38	JIBE 14 RM-1	773,740.18	1,027,419.30	8.655	VI	777,706.56	1,018,274.92	159° 37' 30"	769.74	1" IRON PIPE	JIBE 15	JIBE 15 RM-1	239° 37' 28"	326.40
1-S	773,740.18	1,027,419.30	USCE 2-2.3 9 76	773,159.12	1,029,188.30	7.42	VII	777,438.56	1,018,996.50	160° 31' 06"	3349.82	1" IRON PIPE	JIBE 16	JIBE 16 RM-1, RESET	245° 15' 09"	315.09
1-S-(1)	773,900.56	1,026,945.73	JIBE 1	773,752.29	1,027,383.55	8.317	VIII	776,321.38	1,022,154.54	156° 38' 51"	1442.06	1" IRON PIPE	JIBE 17	JIBE 17 RM-1	246° 12' 18"	195.00
1-S-(2)	774,060.95	1,026,472.15	JIBE 15	774,709.75	1,024,548.55	2.61	IX	775,749.77	1,023,478.48	154° 54' 05"	5405.97	DNR 110B (SM)	JIBE 18	JIBE 18 RM-1	251° 53' 24"	137.00
1-S-(3)	774,221.33	1,025,998.57	JIBE 15 RM-1	774,991.34	1,024,712.60	5.764	X	773,456.68	1,028,374.01	177° 48' 14"	2985.90	DNR R-45	JIBE 20	JIBE 20 RM-1	250° 35' 36"	125.00
1-S-(4)	774,381.71	1,025,524.99	DNR-R110B	775,749.77	1,023,478.48		XI	773,342.27	1,031,357.72			TIDAL 4	JIBE 21	JIBE 21 RM-1	245° 59' 44"	170.00
1-S-(5)	774,542.09	1,025,051.41	JIBE 2	776,339.85	1,021,675.33	5.16										
2S	774,991.34	1,024,712.60	JIBE 2 RM-1	776,272.44	1,022,184.41											
2-S-(1)	775,319.77	1,024,384.19	JIBE 16	775,992.06	1,022,002.74	3.47										
2-S-(2)	775,530.03	1,023,930.54	JIBE 16 RM-1, RESET 1976	776,278.19	1,022,134.63											
2-S-(3)	775,740.29	1,023,476.90	JIBE 16 RM-2	776,156.02	1,022,078.32											
2-S-(4)	775,950.55	1,023,023.26	JIBE 17	777,180.74	1,019,251.36	3.78										
2-S-(5)	776,160.81	1,022,569.62	JIBE 17 RM-1	777,359.16	1,019,330.04	6.63										
3-S	776,278.19	1,022,134.63	JIBE 17 RM-2	777,267.66	1,019,289.69											
3-S-(1)	776,358.98	1,021,644.80	JIBE 18	778,161.90	1,016,494.19	3.00										
3-S-(2)	776,602.76	1,021,203.32	JIBE 18 RM-1	778,292.11	1,016,536.77	6.33										
3-S-(3)	776,789.97	1,020,739.69	JIBE 18 RM-2	778,387.16	1,016,567.86											
3-S-(4)	776,977.17	1,020,276.06	JIBE 3	778,373.08	1,016,226.78	4.64										
3-S-(5)	777,164.38	1,019,812.43	JIBE 3 RM-1	778,605.09	1,015,338.46											
4-S	777,359.16	1,019,330.04	JIBE 19 RM-1	778,814.31	1,013,633.75	8.67										
4-S-(1)	777,553.94	1,018,847.65	JIBE 20	779,745.57	1,010,717.63	3.87										
4-S-(2)	777,768.44	1,018,396.12	DNR-R-66			10.11										
4-S-(3)	777,929.49	1,017,925.15	JIBE 20 RM-1	779,863.47	1,010,759.16	7.64										
4-S-(4)	778,055.84	1,017,441.37														
4-S-(5)	778,182.19	1,016,957.60														
5-S	778,292.11	1,016,536.77														
5-S-(1)	778,418.47	1,016,053.00														
5-S-(2)	778,544.82	1,015,569.23														
5-S-(3)	778,671.17	1,015,085.46														
5-S-(4)	778,797.52	1,014,601.69														
6-S	779,036.18	1,013,687.91														
7-S	779,863.47	1,010,759.16														



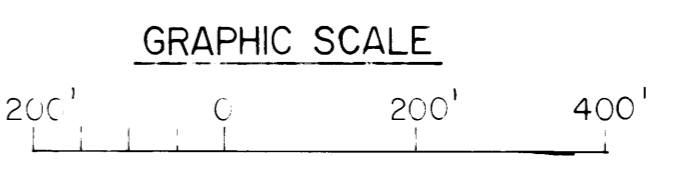
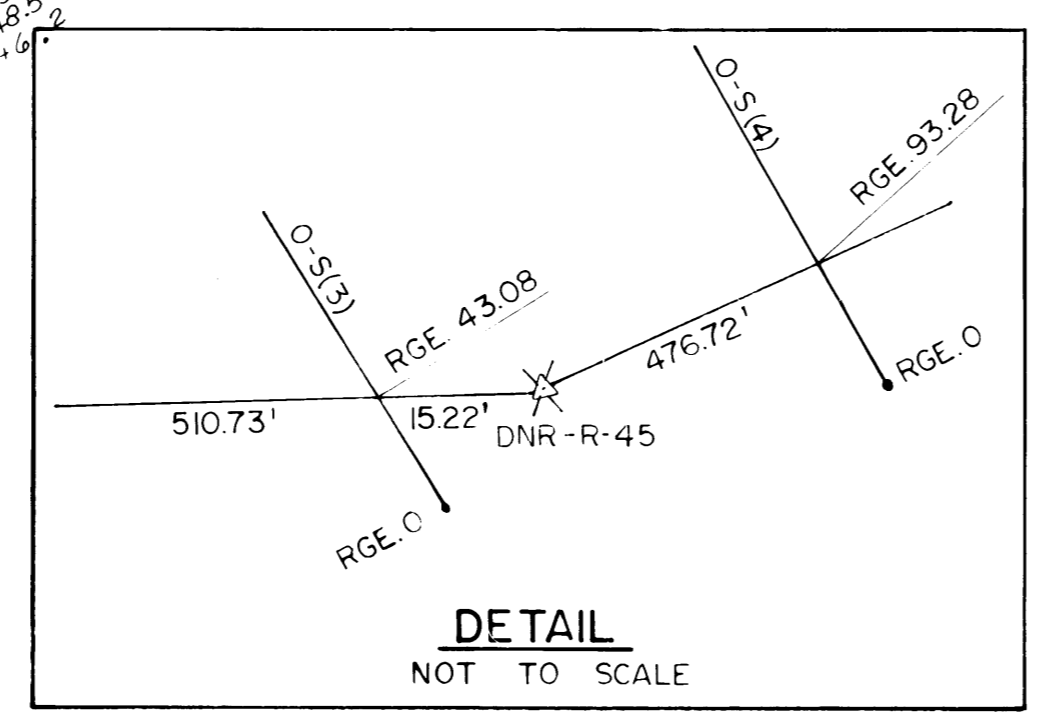
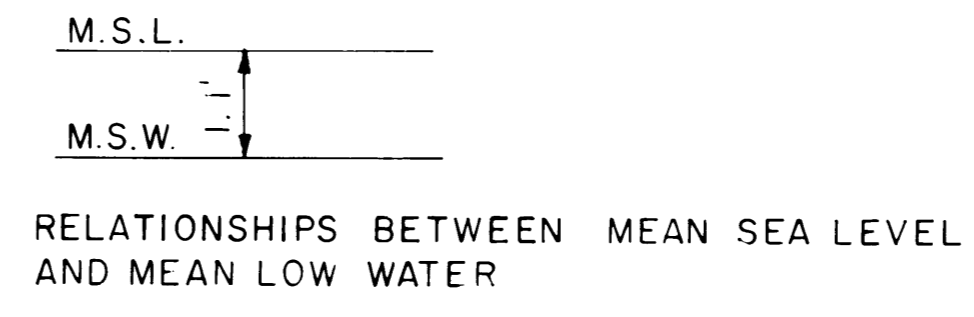
SAFETY ON THIS JOB
DEPENDS ON YOU

REVISIONS			
NO	SYM	ZONE	DESCRIPTION



- NOTES:
- ALL ELEVATIONS ARE IN FEET AND TENTHS AND ARE REFERRED TO MEAN SEA LEVEL.
 - COORDINATES ARE BASED ON THE STANDARD PLANE RECTANGULAR COORDINATE SYSTEM FOR THE EAST ZONE OF FLORIDA.
 - ALL AZIMUTHS (0-SOUTH) ARE GRID AZIMUTHS.
 - CORPS OF ENGINEERS MONUMENTS ARE STANDARD BRONZE DISKS SET IN CONCRETE.
 - FOR ADDITIONAL NOTES AND LEGEND SEE SHEET NO. 1.

- LEGEND:
- △ CONCRETE MONUMENT WITH HORIZONTAL POSITION
 - ⊗ CONCRETE MONUMENT WITH HORIZONTAL AND VERTICAL POSITION
 - SURVEY MARKER WITH HORIZONTAL POSITION
 - × CONCRETE MONUMENT WITH VERTICAL POSITION ONLY
 - IRON PIPE



DEPARTMENT OF THE ARMY
JACKSONVILLE DISTRICT, CORPS OF ENGINEERS
JACKSONVILLE, FLORIDA

ST. LUCIE INLET, FLORIDA

DREDGING AND JETTY CONSTRUCTION

CUTS 1 AND 2
BEACH DISPOSAL PLAN AND CONTROL

DESIGN ENG: B.M. J.R.H.
INV. NO. F
SCALE: AS SHOWN
DATED: DEC. 1977
SHEET 8 OF 31